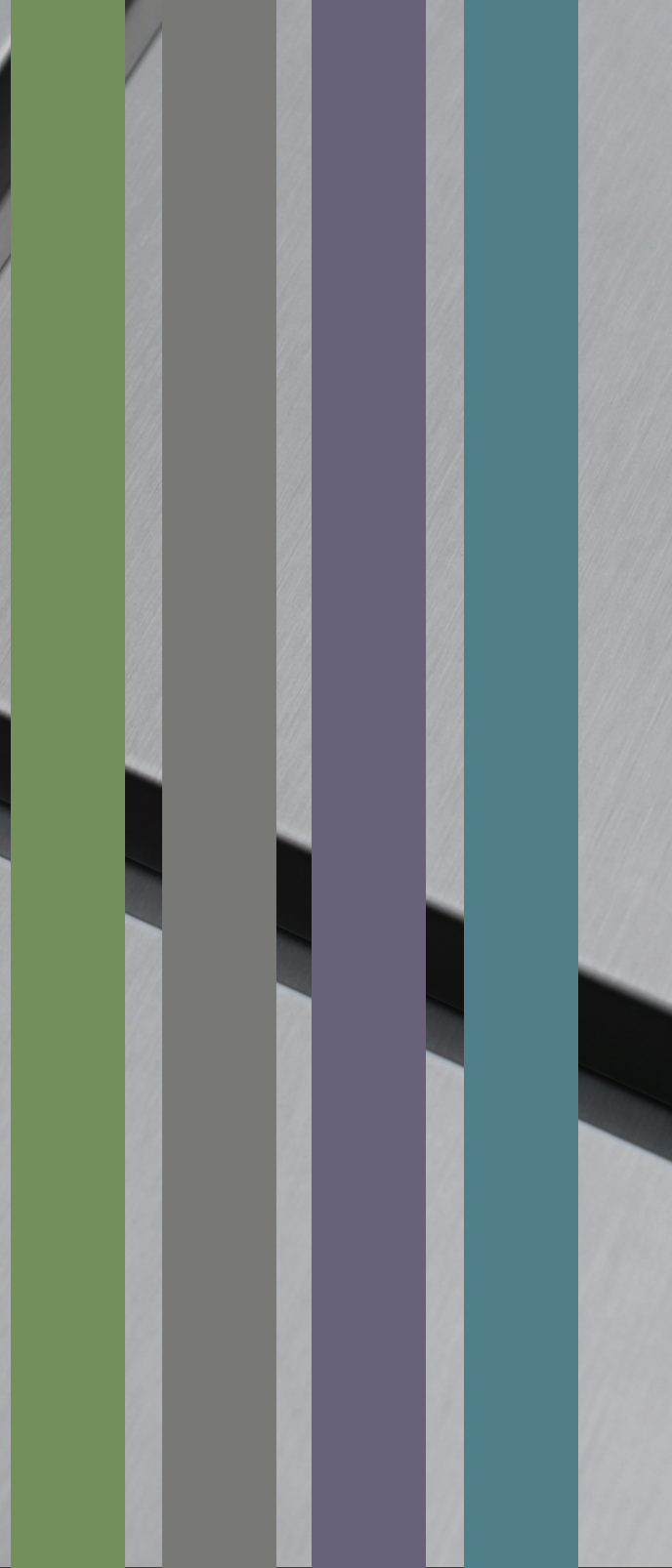


ZERO
RIVETS



RIVETLESS™ PANEL SOLUTION



ARCHITECTURAL PANEL SYSTEM

100% CONCEALED FASTENERS

ARCHITECTURAL PANEL TYPE

EVO™ RIVETLESS™

Innovative – Patent Pending

Free of exposed fasteners

NO RIVETS = Elegant appearance

Superior Structural performance

Standardized System by design

Coast-2-Coast Mfg consistency

Available thru US & CDN partners

NFPA285 tested with EVOMAXci™

EVO™ Integrated Stiffener

Value Engineered: various finishes

EVOWOOD/EVOSTONE/EVOEXOTIC

Matched look = less load and \$ave

Able to replace individual panels

Panels are deliverable to site faster

A PARADIGM SHIFT IN THE MAKING

Our objective is to establish the EVO™ RIVETLESS™ panel system as the highest standard of ACM panels, anywhere.

EVO's™ elegant appearance offers superior Value and Performance to any type of façade, simple or complex.

EVO's™ Exclusive Manufacturer's Network in North America, ensures Quality Assurance in production and installation procedures, attainable through our standardized system design. Architects, Developers and decision-makers, will appreciate excellence in our planning, execution, delivery and service follow thru, as being a signature of our Network.

The EVO™ Network provides a collaborative resource between manufacturer's to complete projects on-time, discuss innovations, remain competitively positioned with broad appeal in N. America and confidently be the leaders within their industry, year-after-year.

Future testing for compliance to: CAN/ULC S134-13, Miami-Dade HVHZ tests and others, will continue to position EVO™ RIVETLESS™ at the forefront of innovative solutions.

RIVETTED (OTHERS)

Status Quo

Unightly screws and rivets

Color match screws and rivets

No manufacturing consistency between fabricators

TESTED + CERTIFIED

Reaching New Heights with these Professionals



Intertek



EVOWOOD 

ZERO RIVETS

EVOSTONE 

ZERO RIVETS

PERFORMANCE + TECH SPECS

RAINSCREEN TESTING

AAMA 508 - 07 COMPLIANT
Voluntary Test Method and Specification
for Pressure Equalized
Rain Screen Wall Cladding Systems

AIR/WATER/WIND PERFORMANCE

AAMA 501.1-05 (Dynamic)
ASTM E 1233 (Modified)
ASTM E 283 (Static)
ASTM E 330 (Static)
ASTM E 331 (Static)

EVO STONE PERFORMANCE

Evaluation of EVO STONE Coating
System testing in accordance with:
ASTM B117-11 (Salt Spray)
ASTM D4541-09 (Adhesion Strength)
ASTM D2794 (Impact Resistance)
ASTM D6944-09 (Thermal Cycling)
ASTM D2247-11 (Humidity Resistance)
ASTM G155 (Accelerated Weathering)
ASTM D1654 (Corrosion Creepback)
ASTM G155-13 (Solar & Weathering)

FIRE TEST METHOD

NFPA 285
Standard Fire Test Method For
Evaluation of Fire Propagation
Characteristics of Exterior Non
Load Bearing Wall Assemblies
Containing Combustible Components

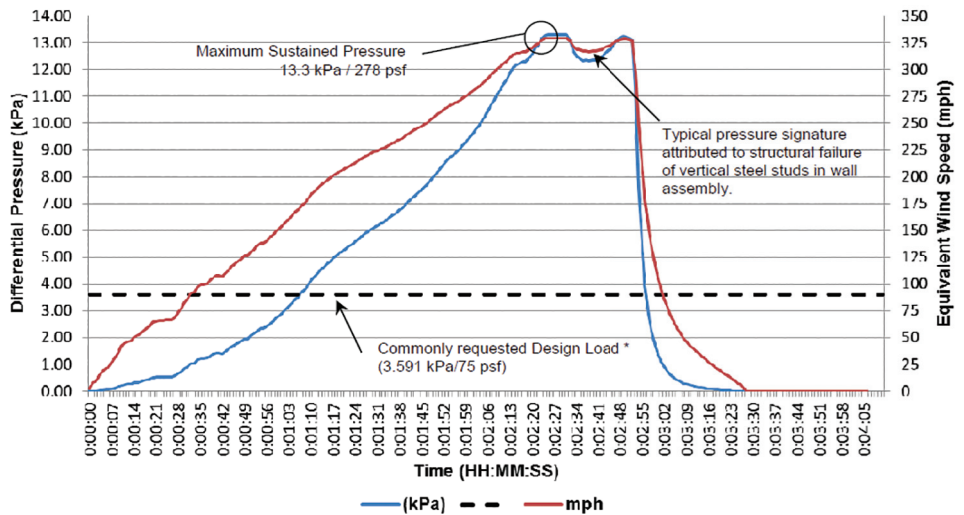
MATERIAL SIZE AVAILABILITY

PE & FR core options with sheet material sizes
W 50" | 62" L up to 196" T 4mm | 6mm

EVO™ Architectural Panel System (U.S. Pat. Pending)

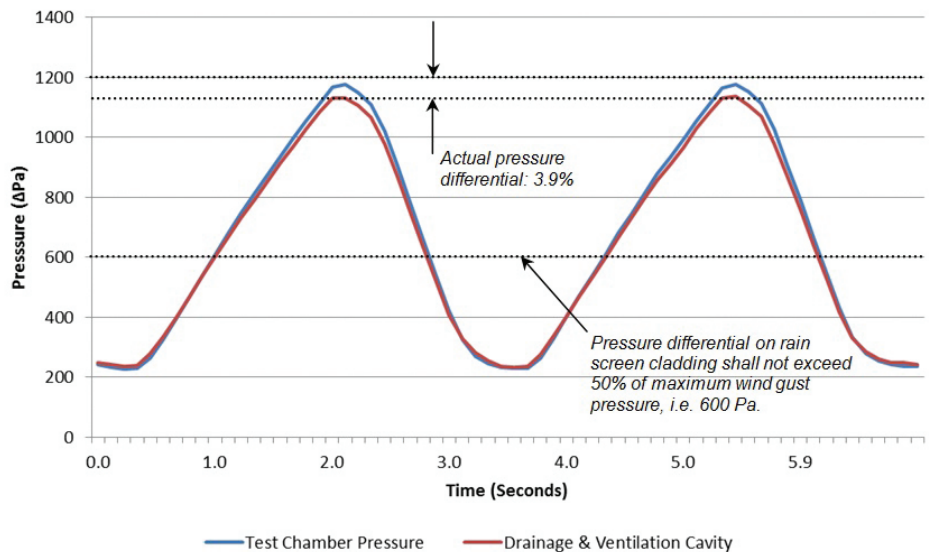
DIFFERENTIAL PRESSURE & EQUIVALENT WIND SPEED VS. TIME (Loading to failure in the Negative Wind Load Direction)

Exova Specimen No: 15-06-M0134 | EVO™ RIVETLESS™



AAMA 508-07 - PRESSURE EQUALIZATION BEHAVIOR

Exova Specimen No: 14-06-M0187-B | EVO™ RIVETLESS™



EVOEXOTIC⁺

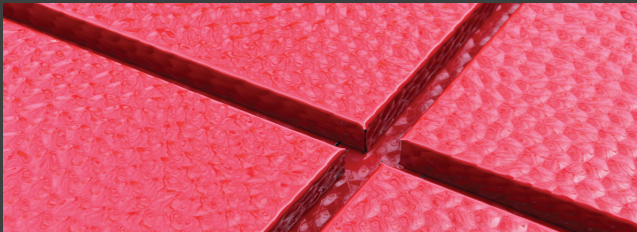
ZERO
RIVETS

EVOPURE⁺

ZERO
RIVETS

CHANGING THE STANDARD BY DESIGN

GUIDING PRINCIPLES BEHIND OUR EVO™ RIVETLESS™ SYSTEM



"Companies that do not practice Smart Lean Manufacturing are doomed to mediocrity & ultimately failure."

J. LIKER



"For you to sleep well at night, the aesthetic, the quality, has to be carried all the way through."

STEVE JOBS

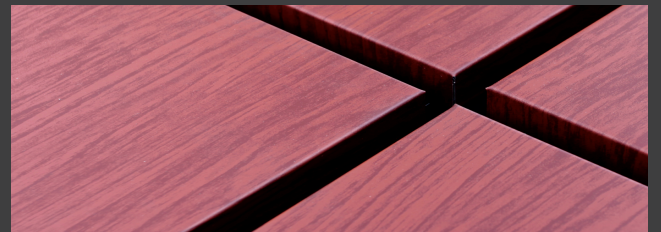
"Design is not what it looks like and feels like. Design is how it works."

STEVE JOBS



"Good design is nothing less than the translation of functional specifications. When it expresses & supports functionality, design becomes a selling point."

EUGEN GASSMANN



Time savings through implementing Lean Manufacturing practices can result in: cost savings, cost avoidance, and indirect savings, benefiting project outcome measurably.



Altech Panel Systems, Inc.
One Johnson St. Suite # 118
Cartersville, GA 30120-3276

Toll Free 1.855.684.6178

www.altechpanel.com